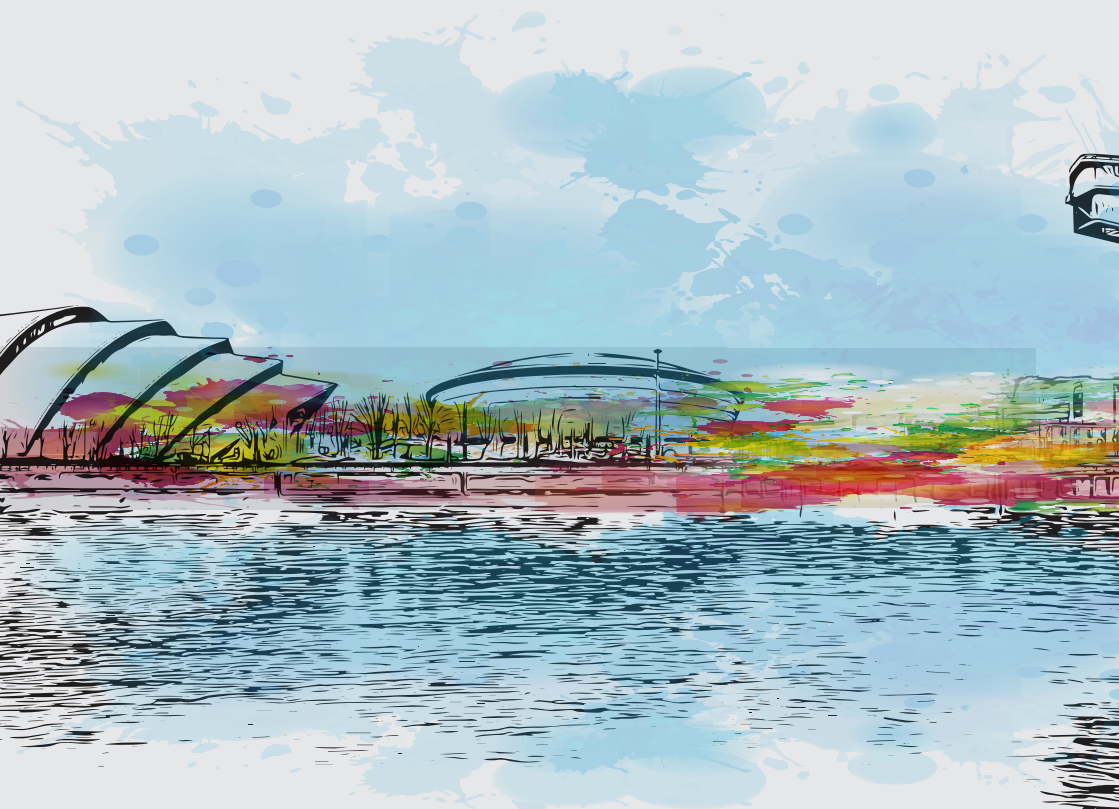




# EUROPEAN HUMAN GENETICS CONFERENCE 2023

Hybrid Conference  
SEC | Glasgow – United Kingdom | June 10 – 13



EUROPEAN SOCIETY OF HUMAN GENETICS

## PROGRAMME

<https://2023.eshg.org/>  
[facebook.com/eshg.org](https://facebook.com/eshg.org)

@eshgsociety  
#eshg2023

## General

European Society of Human Genetics.....	3
Organisation & Contact Information .....	3
Acknowledgements.....	4
Future European Human Genetics Conferences .....	4
CME Credits.....	4
Virtual Conference Platform & Conference App.....	5

## ESHG Scientific Programme

Programme - Saturday .....	6
Programme - Sunday.....	8
Programme - Monday.....	10
Programme - Tuesday .....	12
Early Career Award Candidates .....	15
Posters .....	16
Business and Ancillary Meetings.....	18

## Industry

Corporate Satellites .....	20
Floor Plan - Exhibition & Poster Hall.....	22
List of Exhibitors .....	24
Information Exhibition & Poster Area (see the Exhibition Catalogue for more information) .....	26

## Information

General Information .....	28
Networking Events.....	30
General Venue Floor Plan.....	31

## European Society of Human Genetics

**The ESHG** was established on March 15, 1967 by a small group of outstanding European Geneticists (European Journal of Human Genetics: 3, 63-64, 1995). The decision which led to the founding of the ESHG was taken at an informal meeting of European participants at the IIIrd International Congress of Human Genetics in Chicago in September 1966. Membership was open; the first annual membership fee was \$6. The founding chairman was J. Mohr who was secretary-general of the society until 1991.

**The Society** has an Executive Board (comprising the officers of the Society) who report to the Governing Board, which consists of about 30 members. According to the statutes, each year a sufficient number of Board members are elected to guarantee a balanced group in terms of gender, speciality and country representation. Up to half of the vacant positions can be proposed by the Board. The General Assembly, taking place at the conference, needs to confirm the proposals.

The Board has set up several committees to oversee aspects of the Society organisation, and appoints the chairmen. A full activity report is presented to members at the General Assembly at the annual European Human Genetics Conference.

There is an Annual Meetings Committee which is responsible for all the practical and legal arrangements for the European Human Genetics Conference. The scientific programme is arranged by the Scientific Programme Committee.

### ESHG Office

European Society of Human Genetics

c/o Vienna Medical Academy  
Alser Strasse 4, 1090 Vienna, AT  
<https://2023.eshg.org/>

T: +43 1 405 13 83 39  
F: +43 1 407 82 74  
E: [office@eshg.org](mailto:office@eshg.org)  
[membership@eshg.org](mailto:membership@eshg.org)

## European Human Genetics Conference 2023

### Conference Organisation and Abstract Management

ESHG 2023 Conference Office  
Wiener Medizinische Akademie GmbH  
Jana Ebert, Lydia Schnedl  
Alser Strasse 4, 1090 Vienna, AT  
T: +43 1 405 13 83 35 / 14  
F: +43 1 407 82 74  
E: [conference@eshg.org](mailto:conference@eshg.org)  
[www.medacad.org](http://www.medacad.org)

### Exhibition, Sponsoring and Corporate Satellites

**ROSE** INTERNATIONAL  
Exhibition Management and Congress Consultancy bv  
Jantje de Roos, Flora van Laer  
P.O. Box 93260  
2509 AG The Hague, NL  
T: +31 70 383 8901  
F: +31 70 381 8936  
E: [eshg@rose-international.com](mailto:eshg@rose-international.com)  
[www.rose-international.com](http://www.rose-international.com)

### Hotel Accommodation

Glasgow Convention Bureau  
Glasgow, United Kingdom  
E: [accommodation@glasgowconventionbureau.com](mailto:accommodation@glasgowconventionbureau.com)



### Future European Human Genetics Conferences

#### European Human Genetics Conference 2024

Berlin, Germany

**June 1 – 4, 2024**

#### European Human Genetics Conference 2025

Milan, Italy

**May 24 – 27, 2025**

#### European Human Genetics Conference 2026

Gothenburg, Sweden

**June 13 – 16, 2026**

### CME Credits

As in previous years, the European Human Genetics Conference has applied for accreditation from the European Accreditation Council of Continuing Medical Education (EACCME®). The accreditation is still pending at the time of printing this programme. Please see the ESHG conference website for the latest updates: <https://2023.eshg.org/myconference/cme-credits/>

Through an agreement between the Union Européenne des Médecins Spécialistes and the American Medical Association, physicians may convert EACCME® credits to an equivalent number of AMA PRA Category 1 Credits™. Information on the process to convert EACCME® credit to AMA credit can be found at [www.ama-assn.org/education/earn-credit-participation-international-activities](http://www.ama-assn.org/education/earn-credit-participation-international-activities). Live educational activities, occurring outside of Canada, recognised by the UEMS-EACCME® for ECMEC®s are deemed to be Accredited Group Learning Activities (Section 1) as defined by the Maintenance of Certification Program of the Royal College of Physicians and Surgeons of Canada.





### Virtual Conference Platform

All registered participants have access to the ESHG 2023 virtual conference platform until Nov. 30, 2023. On the platform participants will find:

- Full conference programme incl. available corporate satellites
- The option to create their own personalised programme
- Live stream of all conference sessions.  
Live stream of corporate satellites as indicated on the Virtual Platform.
- Hybrid posters and E-Posters in digital form
- Access on-demand content
- Profiles of speakers and Early Career Award Candidates

Access the platform



Participants can access the platform using the same e-mail address and password as used for registration. Scan the QR code to access the virtual conference platform.

### The ESHG 2023 Conference App

Do you always want to be up-to-date? The ESHG Society App will guide you through the programme day by day or by session type, will make available profiles of speakers and poster presenters and help you to find exhibitors by name or by services provided. Add papers or entire sessions to your personal mobile calendar, receive push messages with important reminders.

*Available for iOS and Android in your App and Play Stores. Search for European Society of Human Genetics.*

Download the mobile app

<https://2023.eshg.org/myconference/conference-app/>




### Live Stream in the Exhibition

The plenary lecture hall is equipped with a live transmission possibility to the live stream area in the exhibition Hall 4. The programme in Hall 5 will be transmitted to this area during exhibition opening hours.

### IMPORTANT NOTICE

Please note that taking pictures or filming during the sessions is allowed, unless explicitly requested otherwise by the presenter.

ROOM	HALL 5	CLYDE AUDITORIUM	HALL 2	LOMOND AUDITORIUM
LEVEL	SEC CENTRE, GROUND LEVEL	SEC ARMADILLO, GROUND LEVEL	SEC CENTRE, GROUND LEVEL	SEC CENTRE, GROUND LEVEL
08.30 - 10.00		<b>E01 New Technologies: Recent advances in sequencing technologies</b> E01.1 D. Lipson E01.2 J. Koralch E01.3 M. Previte	<b>S01 Translational metabolism: From inborn errors of metabolism to multifactorial diseases</b> S01.1 S. Froese S01.2 C. Venditti S01.3 A. Erez	
10.00 - 10.30	<b>Coffee Break (Exhibition Hall)</b>			
10.30 - 12.00	<b>E03 Let's get up to date on blood cancer genetics and genomics</b> E03.1 H. S. Scott E03.2 A. de Rio Machin	<b>W01 Exome sequencing for beginners</b> C. Gilissen G. Santen E. Souche G. Houge R. Abou Jamra S. Ossowski	<b>W02 Dysmorphology 1</b> S. Douzgou Houge P. Krawitz A. Bouman	<b>W03 Termination of pregnancy: Legislation and ethics</b> S. Kalantari R. Silva M. Parachini J. C. Pinto Ferreira 
12.00 - 13.45	<b>Poster Viewing - Lunch Break - Exhibition (Exhibition Hall)</b>			<b>12.15 - 13.15 ESHG podcast</b> What is the next ethical frontier in genetics?
13.45 - 14.15	<b>PL0 Welcoming Address</b>			
14.15 - 15.00	<b>PL1 ESHG Award Lecture</b> PL1.1 M. Zernicka-Goetz			
15.00 - 16.00	<b>PL2 Opening Plenary Session</b> PL2.1 C. E. Mason PL2.2 K. P. Harden			
16.00 - 16.30	<b>Fruit Break, Free Poster Viewing, Exhibition (Exhibition Hall)</b>			
16.30 - 18.00	<b>PL3 What's New?</b> PL3.1 J. Lord PL3.2 D. Brooks* PL3.3 K. Wood* PL3.4 N. Andersson* PL3.5 Y. Yogev* PL3.6 N. Pontikos			
18.00 - 18.30	<b>Coffee Break, Free Poster Viewing, Exhibition (Exhibition Hall)</b>			
18.30 - 20.00	<b>C01 RNA and epigenetics in intellectual disability</b> C01.1 M. Niceta C01.2 F. Mattioli C01.3 M. Morleo C01.4 M. Moysés-Oliveira* C01.5 J. Hentschel C01.6 H. Mor-Shaked	<b>C02 New treatments and clinical approaches</b> C02.1 R. Yadav C02.2 N. Ahmed C02.3 T. Y. Tan C02.4 J. McDermott* C02.5 K. Tsuo* C02.6 J. Barrett	<b>C03 Multiple congenital anomalies</b> C03.1 S. Da'as* C03.2 E. Sackey C03.3 E. Audain Martinez* C03.4 A. Hebert* C03.5 G. Beaman C03.6 I. Perrault	<b>C04 Clinical genetic counseling</b> C04.1 M. Hill C04.2 V. van der Schoot C04.3 H. Quigley* C04.4 S. Alkaff* C04.5 Á. Mendes C04.6 J. Gurasashvili*

\* An asterisk indicates that the presenter is an Early Career Award Candidate



For a complete overview of the Saturday corporate satellites go to page 20

M1	FORTH ROOM	HALL 1	CORPORATE SATELLITES	ROOM LEVEL
SEC CENTRE, LEVEL 1	SEC ARMADILLO, GROUND LEVEL	SEC CENTRE, GROUND LEVEL		
<b>E02</b> Not only DNA editing: Gentler ways to tweak genes E02.1 A. Lombardo E02.2 M. Biagioli				08.30 - 10.00
<b>Coffee Break (Exhibition Hall)</b>			10.00 - 11.30 Corporate Satellites	10.00 - 10.30
<b>E04</b> Harnessing pleiotropy E04.1 L. O'Connor E04.2 D. Posthuma	<b>E05</b> Therapeutic Gene Editing in Europe: What will it take to make it happen? E05.1 V. L. Raposo E05.2 N. Munung <b>ELPAG</b>	<b>W04</b> EJHG: How to publish your genomics research A. McNeill G. Katta J. Fasham D. Houtman		10.30 - 12.00
<b>G01</b> 12.15 - 13.45 Get2gether EBMG/UEMS-SMG	<b>Poster Viewing - Lunch Break - Exhibition (Exhibition Hall)</b>		12.00 - 13.30 Corporate Satellites	12.00 - 13.45
				13.45 - 14.15
				14.15 - 15.00
				15.00 - 16.00
<b>Fruit Break, Free Poster Viewing, Exhibition (Exhibition Hall)</b>				16.00 - 16.30
				16.30 - 18.00
<b>Coffee Break, Free Poster Viewing, Exhibition (Exhibition Hall)</b>				18.00 - 18.30
<b>C05</b> Internal medicine genetics C05.1 N. Hornig C05.2 M. Gosselink* C05.3 H. Martens* C05.4 B. Jacobs* C05.5 E. Vorsteveld* C05.6 N. de Klein	<b>C06</b> Inherited metabolic disorders C06.1 M. Frontini C06.2 R. Taylor C06.3 S. L. Stenton* C06.4 T. Smith* C06.5 J. Hopkins* C06.6 G. Varshney	<b>C07</b> Evolutionary genetics & genetics of diverse populations C07.1 I. Agarwal C07.2 S. Waldman* C07.3 Y. Timasheva C07.4 X. Zhang* C07.5 A. Sartori* C07.6 E. Pierce-Hoffman		18.30 - 20.00

\* An asterisk indicates that the presenter is an Early Career Award Candidate



Saturday Programme

ROOM	HALL 5	CLYDE AUDITORIUM	HALL 2	LOMOND AUDITORIUM
LEVEL	SEC CENTRE, GROUND LEVEL	SEC ARMADILLO, GROUND LEVEL	SEC CENTRE, GROUND LEVEL	SEC CENTRE, GROUND LEVEL
08.30 - 10.00	<b>S02 Sex differences in neurodevelopmental disorders</b> S02.1 E. Gardner S02.2 S. Sanders S02.3 T. Turner	<b>E06 Spatial transcriptomics/cell lineages</b> E06.1 M. Spielmann E06.2 M. Haniffa	<b>S03 Application of GWAS in social sciences</b> S03.1 M. Mills S03.2 A. Okbay S03.3 P. Appelbaum ELPAG	<b>S04 Honoring diversity: Toward culturally competent genetic counseling</b> S04.1 J. MH Lee S04.2 A. Osei-Tutu S04.3 K. Al Kharusi ELPAG
10.00 - 10.30	<b>Coffee Break, Free Poster Viewing, Exhibition (Exhibition Hall)</b>			
10.30 - 12.00	<b>C08 Reproductive genetics</b> C08.1 J. Pan C08.2 R. Essers* C08.3 A. Lettieri* C08.4 F. Yang* C08.5 O. Kalyon* C08.6 T. Laisk	<b>C09 Genome variation: from small to large</b> C09.1 R. Beaumont C09.2 U. L. Ho* C09.3 E. Dolzhenko C09.4 T. Vanderstichele* C09.5 A. Liu* C09.6 Y. Mostovoy	<b>C10 Neurogenetics: an update</b> C10.1 E. Gustavsson C10.2 S. Bizzotto C10.3 V. Chelban* C10.4 L. Pavinato* C10.5 K. Ibañez C10.6 J. Henck	<b>C11 Genetic epidemiology of molecular traits</b> C11.1 D. Kaptijn C11.2 S. Moix* C11.3 L. Niu* C11.4 L. Ottensmann* C11.5 L. Kvastad* C11.6 J. Fadista
12.00 - 13.00	<b>Poster Viewing - Lunch Break - Exhibition (Exhibition Hall)</b>			
13.00 - 14.00	<b>Poster Viewing with Authors and coffee (Group A) (Exhibition Hall)</b>			
14.00 - 15.30	<b>W05 Geneticists on call for cancer genomics</b> C. Turnbull M. Ligtenberg V. Wirta	<b>W06 Are we ready for genomic newborn screening?</b> D. Vears, A. Newson, C. Azevedo Soares, F. Ulph, C. Van Karnebeek, A. Goldenberg, A. Pichini	<b>W07 Dysmorphology 2</b> S. Douzgou Houge P. Krawitz A. Bouman	<b>W08 Let's talk genetics and language</b> R. Moldovan A. Clarke J. Kasmire N. Garde E. Palmer
15.30 - 15.45	<b>Fruit Break, Free Poster Viewing, Exhibition (Exhibition Hall)</b>			
15.45 - 16.45	<b>Poster Viewing with Authors and coffee (Group B) (Exhibition Hall)</b>			
16.45 - 17.00	<b>Time to change rooms</b>			
17.00 - 18.30	<b>S07 Understanding pre-cancer: Molecular analysis to clinical cancer prevention</b> S07.1 T. Kumar S07.2 S. Killcoyne S07.3 P. Sasieni	<b>E08 Should we be routinely returning results from genomic research?</b> E08.1 H. Howard E08.2 M.-A. Young ELPAG	<b>S08 Exploiting new approaches in GWAS</b> S08.1 P.-R. Loh S08.2 L. Davis S08.3 A. Zernakova ESHG	<b>S09 Data Altruism and future of data sharing in genomics</b> S09.1 R. Cook-Deegan S09.2 D. Mascalzoni S09.3 V. Cimina ELPAG

\* An asterisk indicates that the presenter is an Early Career Award Candidate



For a complete overview of the Sunday corporate satellites go to page 20

M1	FORTH ROOM	HALL 1	LIVE STREAM AREA HALL 4	CORPORATE SATELLITES	ROOM
SEC CENTRE, LEVEL 1	SEC ARMADILLO, GROUND LEVEL	SEC CENTRE, GROUND LEVEL			LEVEL
<b>E07 Opportunities and challenges for personalized medicine and pharmacogenomics</b> E07.1 J. A. Johnson E07.2 H. J. Guchelaar	<b>S05 Oligogenics in rare disease</b> S05.1 T. Capra S05.2 B. Udd S05.3 V. Straub  ESHG	<b>S06 Treatment for interferonopathies</b> S06.1 Y. Crow S06.2 J. Espinosa S06.3 M.-L. Fremond		<b>08.30 - 10.00 Corporate Satellites</b>	<b>08.30 - 10.00</b>
Coffee Break, Free Poster Viewing, Exhibition (Exhibition Hall)					
<b>C12 Cancer genetic services</b> C12.1 T. O'Brien C12.2 A. Ciuca* C12.3 L. Forrest C12.4 S. Archer C12.5 R. Purvis* C12.6 C. Tomlinson	<b>C13 Developmental anomalies</b> C13.1 A. Sinclair C13.2 Y. Pei* C13.3 C. Camille C13.4 M. Asif* C13.5 I. Lin* C13.6 M. Chretien	<b>C14 Eye genetics</b> C14.1 F. Yaylacioglu Tuncay C14.2 V. López Soriano* C14.3 F. de Malglaive* C14.4 R. García-Arroyo* C14.5 M. del Pozo Valero* C14.6 Z. Corradi*	<b>C15 Best Poster Session 1</b> <i>(In-Person Only)</i>		<b>10.30 - 12.00</b>
				<b>12.00 - 13.00 Corporate Satellites</b>	<b>12.00 - 13.00</b>
<b>G02 12.15 - 13.15 Get2gether European Reference Networks</b>				<b>Poster Viewing with Authors and coffee (Group A) (Exhibition Hall)</b>	
				<b>13.00 - 14.00</b>	
<b>W09 Structural chromosomal variants</b> N. de Leeuw E. Gerkes D. Bos	<b>W10 Variant classification: views from both side of the Atlantic</b> G. Houge H. Rehm S. Harrison	<b>W11 Interpretation of variants using the Ensembl Variation resources</b> A. Mushtaq A. Frankish J. Foreman O. Austine		<b>14.00 - 15.30 Corporate Satellites</b>	<b>14.00 - 15.30</b>
Fruit Break, Free Poster Viewing, Exhibition (Exhibition Hall)					
<b>Poster Viewing with Authors and coffee (Group B) (Exhibition Hall)</b>					<b>15.45 - 16.45</b>
Time to change rooms					
<b>S10 Somatic mutations in immune disorders</b> S10.1 D. Beck S10.2 S. Mustjoki S10.3 R. Colobran	<b>E09 Epilepsy: Genetics &amp; Treatment</b> E09.1 S. Zuberi E09.2 S. Cobb	<b>E10 Spinal Muscular Atrophy Treatments</b> E10.1 L. Servais E10.2 F. Muntoni  ESHG		<b>18.30 - 20.00 Corporate Satellites</b>	<b>17.00 - 18.30</b>

\* An asterisk indicates that the presenter is an Early Career Award Candidate



ROOM	HALL 5	CLYDE AUDITORIUM	HALL 2	LOMOND AUDITORIUM
LEVEL	SEC CENTRE, GROUND LEVEL	SEC ARMADILLO, GROUND LEVEL	SEC CENTRE, GROUND LEVEL	SEC CENTRE, GROUND LEVEL
08.30 - 10.00	<b>S11 Complete genomes</b> S11.1 A. Phillippy S11.2 G. Logsdon S11.3 V. Schneider	<b>E11 Genetics Care for Trans and Gender Diverse Patients: From Medicalization to Empowerment</b> E11.1 J. Austin E11.2 K. Zayhowski           ESHG ELPAG	<b>S12 Organ-a-chip as a model for genetic disease</b> S12.1 D. Ingber S12.2 M. Tiburcy S12.3 V. Orlova	<b>S13 Leveraging genetic studies for drug discovery</b> S13.1 J. Knight S13.2 N. Sorenzo S13.3 B. Richards
10.00 - 10.30	Coffee Break, Free Poster Viewing, Exhibition (Exhibition Hall)			
10.30 - 12.00	<b>C16 Prenatal genetics</b> C16.1 S. S. Fan* C16.2 M. de Koning* C16.3 A. Gerasimenko* C16.4 G. Jouret* C16.5 N. Ree C16.6 P. Cacheiro	<b>C17 Functional genomics</b> C17.1 H. Niskanen C17.2 G. Lemire* C17.3 R. Hollstein C17.4 M. Jensen* C17.5 R. Warmerdam* C17.6 A. Martin Trujillo	<b>C18 Neurodevelopmental disorders: new genes</b> C18.1 D. Li C18.2 M. Scala* C18.3 M. del Rocio Pérez Baca* C18.4 V. Serpieri* C18.5 C. Zweier C18.6 J. Lemke	<b>C19 Innovative methods in statistical genetics</b> C19.1 M. Garg* C19.2 S. Rubinacci* C19.3 E. Pedersen C19.4 J. Kartau* C19.5 Y. Zhang* C19.6 H. Klinkhammer*
12.00 - 13.00	Poster Viewing - Lunch Break - Exhibition (Exhibition Hall)			12.15 - 13.15 ESHG General Assembly
13.00 - 14.00	Poster Viewing with Authors and coffee (Group C) (Exhibition Hall)			
14.00 - 15.30	<b>W12 Interpreting NGS variants</b> E. Giorgio T. Attie-Bitach I. Filges J. Baptista	<b>W13 Fetal exome sequencing in clinical practice: Practicalities and Pitfalls</b> K. Ormond, C. Lewis, L. Chitty, I. Van den Veyver	<b>W14 Mutations we almost missed</b> C. Gilissen C. Ding S. Laurie E.-J. Kamsteeg S. A. Lynch	<b>W15 GenEthics</b> T. Clancy M. Parker I. Christiaans R. Borghese K. Templeton J. Gurasashvili
15.30 - 15.45	Fruit Break, Free Poster Viewing, Exhibition (Exhibition Hall)			
15.45 - 16.45	Poster Viewing with Authors and coffee (Group D) (Exhibition Hall)			
16.45 - 17.00	Time to change rooms			
17.00 - 18.30	<b>S16 High-throughput functional analysis of variants</b> S16.1 G. Findlay S16.2 J. Geck S16.3 T. Lappalainen	<b>S17 Long reads for solving old problems</b> S17.1 M. Ryten S17.2 I. Deveson S17.3 J. Vermeesch	<b>E13 New mutations and evolution</b> E13.1 V. Gorbunova E13.2 A. Cagan	<b>S18 Co-creating research with participants</b> S18.1 E. Dorris S18.2 T. Collin-Histed S18.3 E. Palmer           ESHG ELPAG

\* An asterisk indicates that the presenter is an Early Career Award Candidate



For a complete overview of the Monday corporate satellites go to page 21

M1	FORTH ROOM	HALL 1	LIVE STREAM AREA HALL 4	CORPORATE SATELLITES	ROOM LEVEL
SEC CENTRE, LEVEL 1	SEC ARMADILLO, GROUND LEVEL	SEC CENTRE, GROUND LEVEL			
<b>S14 Precision medicine in renal cancer</b> S14.1 E. R. Maher S14.2 S. Turajlic S14.3 J. Brugarolas	<b>S15 Placenta: The forgotten organ</b> S15.1 D. Monk S15.2 K. O. Kagan S15.3 A. Fraser	<b>E12 RASopathies</b> E12.1 M. Zenker E12.2 M. Tartaglia		<b>08.30 - 10.00 Corporate Satellites</b>	<b>08.30 - 10.00</b>
<i>Coffee Break, Free Poster Viewing, Exhibition (Exhibition Hall)</i>					
<b>C20 High- and low-penetrance inherited cancer risk</b> C20.1 B. Tesi C20.2 M. Tamlander* C20.3 D. G. O'Mahony* C20.4 A. Tüchler* C20.5 M. Omran* C20.6 P. Di Domenico	<b>C21 Late Breaking Abstracts</b> C21.1 H. Long C21.2 K. Chundru* C21.3 O. Delaneau C21.4 A. Zanetti* C21.5 S. Momen C21.6 F. Supek	<b>C22 Cardiovascular and muscular genomics</b> C22.1 D. Zheng* C22.2 V. Caputo* C22.3 M. Vanhooydonck* C22.4 R. Dore* C22.5 N. Lahrouchi* C22.6 S. Pfisterer	<b>C23 Best Poster Session 2 (In-Person Only)</b>		<b>10.30 - 12.00</b>
<i>Poster Viewing - Lunch Break - Exhibition (Exhibition Hall)</i>				<b>12.00 - 13.00 Corporate Satellites</b>	<b>12.00 - 13.00</b>
<i>Poster Viewing with Authors and coffee (Group C) (Exhibition Hall)</i>					<b>13.00 - 14.00</b>
<b>W16 Climate Emergency/Sustainable Service Delivery in Genomics</b> R. Taylor, F. Forzano, H. Fowler, M. Farley, C. Babb de Villiers	<b>W17 Pharmacogenetics testing: ready for implementation?</b> C. Rodriguez-Antona H. J. Guchelaar K. Surprenant J. A. Johnson P. Damkier	<b>W18 Clinical Genetics and Imprinting Disorders: Experiences from Genetic Testing and Counselling</b> J. Blik P. Lapunzina G. Pérez de Nardares		<b>14.00 - 15.30 Corporate Satellites</b>	<b>14.00 - 15.30</b>
<i>Fruit Break, Free Poster Viewing, Exhibition (Exhibition Hall)</i>				<b>G03 Get2Gether IVDR</b>	
<i>Poster Viewing with Authors and coffee (Group D) (Exhibition Hall)</i>					<b>15.45 - 16.45</b>
<i>Time to change rooms</i>					
<b>E14 3D genomes explained</b> E14.1 L. Giorgetti E14.2 M. Robson	<b>S19 Addressing diversity in the genomic world</b> S19.1 M. Sohail S19.2 E. Kenny S19.3 Y. Okada <b>ESHG</b>	<b>S20 Personalized preventive oncology for children and adolescents</b> S20.1 W. D. Foulkes S20.2 P. Berlanga S20.3 R. van Bostel			<b>17.00 - 18.30</b>

\* An asterisk indicates that the presenter is an Early Career Award Candidate



ROOM	HALL 5	CLYDE AUDITORIUM	HALL 2	LOMOND AUDITORIUM
LEVEL	SEC CENTRE, GROUND LEVEL	SEC ARMADILLO, GROUND LEVEL	SEC CENTRE, GROUND LEVEL	SEC CENTRE, GROUND LEVEL
09.00 - 10.30	<b>S21 Gene-disease relationships</b> S21.1 C. Thaxton S21.2 J. Foreman S21.3 J. Vorstman	<b>S22 Diagnostics in prenatal setting - the present and the future</b> S22.1 A. Borrell S22.2 J. Simpson S22.3 M. Hill ESHG	<b>S23 Beyond coding point mutations: New mutation types in cancer</b> S23.1 R. de Voer S23.2 N. Whiffin S23.3 F. Ditlein	<b>E15 Diagnosis and treatment of genetic hearing loss</b> E15.1 B. Vona E15.2 A. El Amraoui
10.30 - 11.00	<i>Coffee Break (Hall 3)</i>			
11.00 - 12.30	<b>C24 Intellectual disability: an update</b> C24.1 L. Rawlins* C24.2 A. Dingemans* C24.3 E. Cali* C24.4 S. Bassani* C24.5 S. Trajkova* C24.6 S. Baldassari	<b>C25 Diagnostics: large cohorts and novel omics</b> C25.1 S. Walker C25.2 W. Steyaert* C25.3 A. Frankish C25.4 F. Peymani* C25.5 C. Levacher* C25.6 M. Drost	<b>C26 GWAS</b> C26.1 S. Bergmann C26.2 A. Henry* C26.3 C. Auwerx* C26.4 G. Hawkes* C26.5 H. Currant* C26.6 M. Weedon	<b>C27 New technologies in cancer genetics</b> C27.1 R. Tricarico C27.2 D. A. Ferreira* C27.3 D. Mas-Ponte* C27.4 C. Valdivia* C27.5 N. Telkar* C27.6 S. Lobo*
12.30 - 13.30	<i>Lunch (Hall 3)</i>			
13.30 - 14.15	<b>PL4 Mendel Lecture</b> PL4.1 S. Balasubramanian			
14.15 - 14.30	<b>PL5 ESHG Education Award</b> PL5.1 H. Brunner			
14.30 - 14.45	<b>PL6 ELPAG Award</b> PL6.1 T. Clancy			
14.45 - 15.45	<b>PL7 EJHG Awards Young Investigator &amp; Poster Awards Closing</b>			





M1	FORTH ROOM	ROOM
SEC CENTRE, LEVEL 1	SEC ARMADILLO, GROUND LEVEL	LEVEL
<div><div>S24</div><div>Health Economics in Genomic Medicine</div><div>S24.1 I. Goranitis S24.2 G. Patrinos S24.3 P. Biroli</div><div>ESHG</div><div>ELPAG</div></div>	<div><div>E16</div><div>PGS: How close is it to clinical applicability</div><div>E16.1 G. McVean E16.2 P. Munroe</div></div>	09.00 - 10.30
Coffee Break (Hall 3)		10.30 - 11.00
<div><div>C28</div><div>Innovative genomic services</div><div>C28.1 M. Haas C28.2 S. Adam C28.3 E. Vilain C28.4 M. van Lingen* C28.5 M. Plantinga C28.6 C. deFreitas</div></div>	<div><div>C29</div><div>Skin and skeletal disorders: New genes and pathways</div><div>C29.1 T. Cullup C29.2 L. Watts* C29.3 A. Costantini* C29.4 A. Jackson* C29.5 T. Nauth* C29.6 J. Amiel</div></div>	11.00 - 12.30
Lunch (Hall 3)		12.30 - 13.30
		13.30 - 14.15
		14.15 - 14.30
		14.30 - 14.45
		14.45 - 15.45

\*An asterisk indicates that the presenter is an Early Career Award Candidate

Session Types:

Plenary Session	Symposium	Concurrent Session
Educational Session	Get2Gether Session	Corporate Satellite
Workshop		

**IMPORTANT NOTICE:**  
Please note that taking pictures or filming during the sessions is allowed, unless requested otherwise by the presenter. Persons who will not observe this rule will be excluded from the session by the chairpersons.



Session Type Description



### ESHG Early Career Award Candidates

The Scientific Programme Committee has shortlisted presenters for the **ESHG Early Career Awards (ECA)**. The committee will judge the finalists' presentations during the conference.

The following awards will be presented to the winners in the closing ceremony on Tuesday, June 13, 2023 at 14.45 hrs:

- A total of four **ESHG Early Career Awards** are granted for outstanding research by early career scientists presented as a spoken contribution at the conference.
- The **Isabelle Oberlé Award** is awarded yearly since 2002 for best presentation by an early career scientist on research concerning the genetics of intellectual disability.
- The **Lodewijk Sandkuijl Award** was instituted in 2004 to be awarded to the author of the best presentation at the ESHG conference within the field of complex disease genetics and statistical genetics.
- The **Vienna Medical Academy Award** will be awarded to the best presentation in translational genetics therapy of genetic diseases.
- The **Mia Neri Award** will be awarded to the best presentation in cancer research.

All winners will receive a monetary prize in the amount of EUR 500, a complimentary ESHG membership for one year as well as a free participation in next year's conference.

Talks of ECA candidates are marked with an asterisk \* in the programme overview.

Participants can find the profiles of all candidates in the virtual conference platform under the menu option presenters using the filter: ECA / Best Posters

<https://www.m-anage.com/Home/Index/Event/eshg2023/>



Additionally, the list can be found on the ESHG Mobile App under the menu Programme.

### ESHG Early Career Poster Award Candidates

The ESHG proposes the ESHG Early Career Poster Awards for the best posters presented by Early Career Investigators at the meeting. The two winners (one in clinical, the other in basic research) will receive a prize money of EUR 500, a complimentary ESHG membership for one year as well as a free participation in next year's conference.

The five honorable mentions receive a complimentary ESHG membership for one year.

The ESHG Scientific Programme Committee has selected a number of candidates for the ESHG Early Career Poster Awards based on the score of their submission after peer review. Candidate posters can be identified by a rosette on the board.

Participants can find the profiles of all candidates in the virtual conference platform under the menu option presenters using the filter: ECA / Best Posters

<https://www.m-anage.com/Home/Index/Event/eshg2023/>



Additionally, the list can be found on the ESHG Mobile App under the menu Posters.

## Hybrid Posters

All Hybrid Posters will be presented at the in-person conference as a paper poster in the exhibition hall 4. Additionally, presenters will upload an e-poster on the virtual conference platform.

P01 Reproductive Genetics . . . . .	P01.001 - P01.036
P02 Prenatal Genetics. . . . .	P02.001 - P02.031
P03 Sensory disorders (eye, ear, pain). . . . .	P03.001 - P03.033
P04 Internal Organs & Endocrinology (Lung, Kidney, Liver, Gastrointestinal) . . . . .	P04.001 - P04.036
P05 Skeletal, Connective Tissue, Ectodermal and Skin Disorders. . . . .	P05.001 - P05.056
P06 Cardiovascular Disorders . . . . .	P06.001 - P06.040
P07 Metabolic and Mitochondrial Disorders . . . . .	P07.001 - P07.043
P08 Immunology and Hematopoietic System . . . . .	P08.001 - P08.033
P09 Intellectual Disability . . . . .	P09.001 - P09.075
P10 Neurogenetic and Psychiatric Disorders . . . . .	P10.001 - P10.101
P11 Neuromuscular Disorders . . . . .	P11.001 - P11.040
P12 Multiple Malformation/Anomalies Syndromes . . . . .	P12.001 - P12.053
P13 Cancer Genetics . . . . .	P13.001 - P13.142
P14 Genome Variation and Architecture . . . . .	P14.001 - P14.031
P15 Cytogenetics . . . . .	P15.001 - P15.008
P16 New Technologies and Approaches . . . . .	P16.001 - P16.077
P17 Diagnostic Improvements and Quality Control . . . . .	P17.001 - P17.051
P18 Bioinformatics, Machine Learning and Statistical Methods . . . . .	P18.001 - P18.112
P19 Personalized Medicine and Pharmacogenomics . . . . .	P19.001 - P19.059
P20 Population Genetics and Evolutionary Genetics . . . . .	P20.001 - P20.051
P21 Functional Genomics and Epigenomics . . . . .	P21.001 - P21.044
P22 New Treatments for Genetic Disorders . . . . .	P22.001 - P22.010
P23 Genetic Counselling/Services/Education. . . . .	P23.001 - P23.053
P24 Ethical, Legal and Psychosocial Aspects in Genetics. . . . .	P24.001 - P24.030
P25 GWAS . . . . .	P25.001 - P25.081

## Information for Presenters of Hybrid Posters

Posters will be on **display** from:

**Poster mounting** will be possible on:

**Removal** will be mandatory on:

Saturday, June 10, (09.30 hrs) to Monday, June 12 (17.00 hrs)

Saturday, June 10, from 09.30 hrs onwards

Groups A-C: Monday, June 12, 2023: 15.45 – 16.45 hrs

Group D: Monday, June 12, 2023: 16.45 – 17.00 hrs

You can find your poster board number on the ESHG 2023 mobile app or on the 2023 ESHG virtual conference platform.

**Access after Monday, June 12, 17.00 hrs is not possible!** Safety regulations in place for the exhibition break-down do not allow participants in the hall after this time. Please note that posters not removed until this time will be taken down by the staff of the conference centre.

They will be available for (unsupervised) pickup until Tuesday, 16.00 hrs, but will not be stored afterwards or sent to the authors after the meeting.

## Hybrid Poster Presentations

In order to enable discussion and interaction with other participants, it is mandatory for you or one of your group members to be at your poster board at the following time:

- Poster Group A:** 13.00 – 14.00 hrs BST on Sunday, June 11 for posters with board numbers ending with “A” (e.g. P01.001.A)
- Poster Group B:** 15.45 – 16.45 hrs BST on Sunday, June 11 for posters with board numbers ending with “B” (e.g. P01.001.B)
- Poster Group C:** 13.00 – 14.00 hrs BST on Monday, June 12 for posters with board numbers ending with “C” (e.g. P01.001.C)
- Poster Group D:** 15.45 – 16.45 hrs BST on Monday, June 12 for posters with board numbers ending with “D” (e.g. P01.001.D)

If it is not possible for you or one of your group members to be present during the above stated times, please leave a note on your poster board detailing the times when you will be present at the board.

These presentations will only take place in-person in Hall 4. There is no virtual presentation for hybrid posters. Please note that taking pictures is allowed, unless requested otherwise by the presenter.

## Best Hybrid Poster Presentations

The 30 Best Hybrid Posters were selected for a short presentation (3 minutes) in two Concurrent Sessions – C15 on Sunday and C23 on Monday both from 10.30 – 12.00 hrs. These sessions will take place in the Live Stream Area in the exhibition hall 4. After the presentations, participants will have the opportunity to approach the presenters of each poster for questions at their best poster walls next to the Live Stream Area.

## E-Posters

E-Posters will be available digitally on the virtual conference platform. Additionally, in-person participants can make use of the laptops available in Hall 4 at the E-Poster area to browse through all E-Posters and Hybrid posters that have been uploaded to the virtual conference platform. These posters have also been grouped based on the abstract submission topics (please should be refer to the Hybrid Posters information for a detailed overview of all topics).

## Abstracts

Abstracts presented at the ESHG 2023 conference can be found on the following platforms:

- ESHG Virtual Conference Platform
- ESHG Mobile App

**Poster Hall Floor Plan >>> go to page 22 and 23**

As per 19.05.2023

### Friday, June 9, 2023

Time	Meeting	Room
09.00 – 13.00 hrs	ESHG Executive Board Meeting . . . . .	M2+3+4 . . . . . closed
13.30 – 18.00 hrs	ESHG Board Meeting I . . . . .	M2+3+4 . . . . . closed

### Saturday, June 10, 2023

Time	Meeting	Room
09.00 – 13.30 hrs	ESHG PPPC Meeting . . . . .	Gala 1 . . . . . closed
09.00 – 13.30 hrs	ESHG Quality Subcommittee Meeting . . . . .	Gala 2 . . . . . closed

### Sunday, June 11, 2023

Time	Meeting	Room
08.00 – 10.00 hrs	Journal of Community Genetics – Editors' Meeting . . . . .	Gala 2 . . . . . closed
08.30 – 10.30 hrs	European Network of Genetic Nurses and Counsellors Meeting organized by the GNGC branch, EBMG. . . . .	M2+3+4 . . . . . open
10.00 – 11.45 hrs	EBMG Clinical Laboratory Geneticists (CLG) Meeting . . . . .	Gala 1 . . . . . open
10.30 – 11.30 hrs	ERN-ITHACA ExCom Meeting . . . . .	Gala 2 . . . . . closed
11.00 – 13.00 hrs	National Human Genetics Societies Meeting . . . . .	M2+3+4 . . . . . closed
11.00 – 13.00 hrs	Genetic nurses and counsellors professional branch . . . . .	M5 . . . . . closed
12.15 – 13.15 hrs	ESHG Podcast – Editors' Meeting . . . . .	Gala 2 . . . . . closed
12.15 – 14.15 hrs	UEMS Section of Medical Genetics . . . . .	Gala 1 . . . . . closed
14.30 – 15.30 hrs	EJHG Editorial Board Meeting . . . . .	Gala 1 . . . . . closed
15.30 – 17.00 hrs	EBMG Branch of Medical Geneticists . . . . .	Gala 2 . . . . . closed
16.00 – 17.00 hrs	EMQN and European Reference Network (ERN) workshop: Improving testing standards through collaborative EQAs . . . . .	M2+3+4 . . . . . open
16.00 – 18.00 hrs	Kick off UPS-NDDiag . . . . .	Gala 1 . . . . . closed
17.30 – 19.30 hrs	ERN-ITHACA Intermediary Board Meeting . . . . .	M2+3+4 . . . . . closed

### Monday, June 12, 2023

Time	Meeting	Room
08.30 – 10.30 hrs	ESHG Education Committee Meeting . . . . .	Gala 1 . . . . . closed
10.15 – 11.15 hrs	ESHG/ASHG Leadership . . . . .	Gala 2 . . . . . closed
11.00 – 13.30 hrs	GenIDA Scientific Advisory Board Meeting . . . . .	Gala 1 . . . . . closed
12.15 – 13.15 hrs	ESHG General Assembly . . . . .	Lomond Auditorium . . . . . open to members
13.00 – 15.00 hrs	EBMG General Assembly . . . . .	M2+3+4 . . . . . closed
15.00 – 16.30 hrs	IFHGS Executive Board Meeting . . . . .	Gala 2 . . . . . closed

### Tuesday, June 13, 2023

Time	Meeting	Room
12.30 – 13.30 hrs	SPC Meeting . . . . .	M2+3+4 . . . . . closed

#### Disclaimer

Ancillary and satellite meetings shall not state or imply endorsement of, or support by the ESHG of the event, organiser, products or services presented in any verbal statements or printed/electronic media before, after and during the presentations.







EUROPEAN SOCIETY OF HUMAN GENETICS

**SAVE  
THE DATE**

# EUROPEAN HUMAN GENETICS CONFERENCE 2024

**Hybrid Conference**

**Messe Berlin | Berlin – Germany | June 1 – 4**



**EUROPEAN SOCIETY OF HUMAN GENETICS**

**<https://2024.eshg.org/>**  
**[facebook.com/eshg.org](https://facebook.com/eshg.org)**

**@eshgsociety**  
**#eshg2024**

## Overview of Corporate Satellites

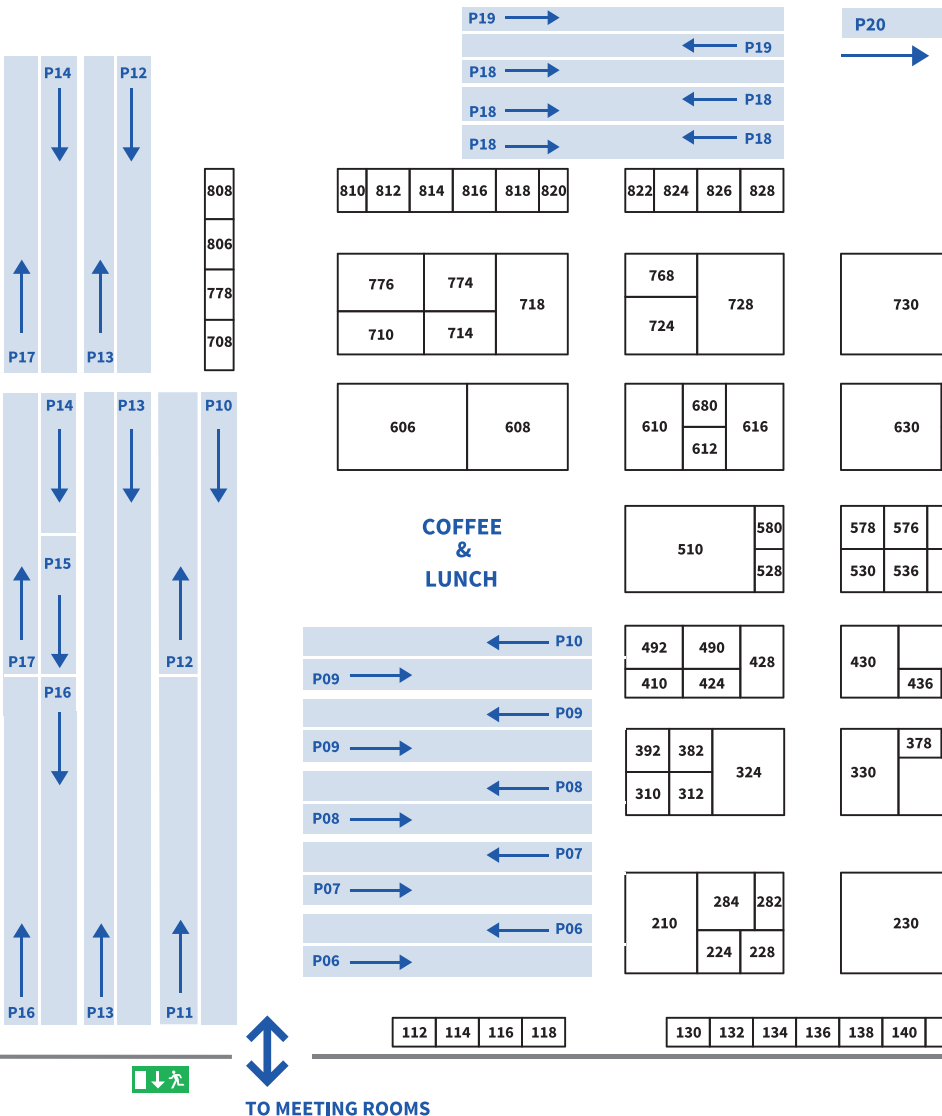
Company	Room	Level	Stand #
<b>Saturday, June 10, 10.00 - 11.30 hrs</b>			
enGenome . . . . .	Alsh 1	0	248
Takara Bio. . . . .	Alsh 2	0	324
Veritas . . . . .	Carron	1	736
<b>Saturday, June 10, 12.00 - 13.30 hrs</b>			
Agilent Technologies . . . . .	Dochart	1	510
Blueprint Genetics . . . . .	Carron	1	650
Congenica . . . . .	Alsh 2	0	138
MGI Tech. . . . .	Boisdale	0	746
QIAGEN . . . . .	Alsh 1	0	472
<b>Sunday, June 11, 08.30 - 10.00 hrs</b>			
3billion . . . . .	Alsh 1	0	430
Bionano . . . . .	Dochart	1	330
Element Biosciences . . . . .	Boisdale	0	840
Sistemas Genómicos . . . . .	Carron	1	738
SOPHiA GENETICS . . . . .	Alsh 2	0	606
<b>Sunday, June 11, 12.00 - 13.00 hrs</b>			
Asuragen, a Bio-Techne Brand . . . . .	Alsh 1	0	268
DNAexus . . . . .	Alsh 2	0	376
Medicover Genetics . . . . .	Carron	1	616
Olink Proteomics . . . . .	Dochart	1	490
Thermo Fisher Scientific . . . . .	Boisdale	0	446
<b>Sunday, June 11, 14.00 - 15.30 hrs</b>			
PacBio . . . . .	Dochart	1	450
Revvity . . . . .	Alsh 1	0	608
Scipio bioscience . . . . .	Alsh 2	0	150
varvis® . . . . .	Carron	1	266
<b>Sunday, June 11, 18.30 - 20.00 hrs</b>			
BGI . . . . .	Carron	1	724
Devyser . . . . .	Alsh 1	0	470
Illumina . . . . .	Boisdale	0	230
Integrated DNA Technologies . . . . .	Alsh 2	0	392



Overview of Corporate Satellites

Company	Room	Level	Stand #
Monday, June 12, 08.30 - 10.00 hrs			
CENTOGENE . . . . .	Alsh 2	0	460
Cytiva . . . . .	Alsh 1	0	424
Singular Genomics. . . . .	Dochart	1	572
Monday, June 12, 12.00 - 13.00 hrs			
Beckman Coulter Life Sciences. . . . .	Alsh 2	0	310
Golden Helix. . . . .	Alsh 1	0	566
Oxford Nanopore Technologies . . . . .	Boisdale	0	728
Roche Sequencing Solutions . . . . .	Dochart	1	350
Twist Bioscience . . . . .	Carron	1	260
Monday, June 12, 14.00 - 15.30 hrs			
Illumina . . . . .	Carron	1	230
Parse Biosciences. . . . .	Alsh 2	0	134
Sampled. . . . .	Dochart	1	440
SeqOne Genomics . . . . .	Alsh 1	0	278

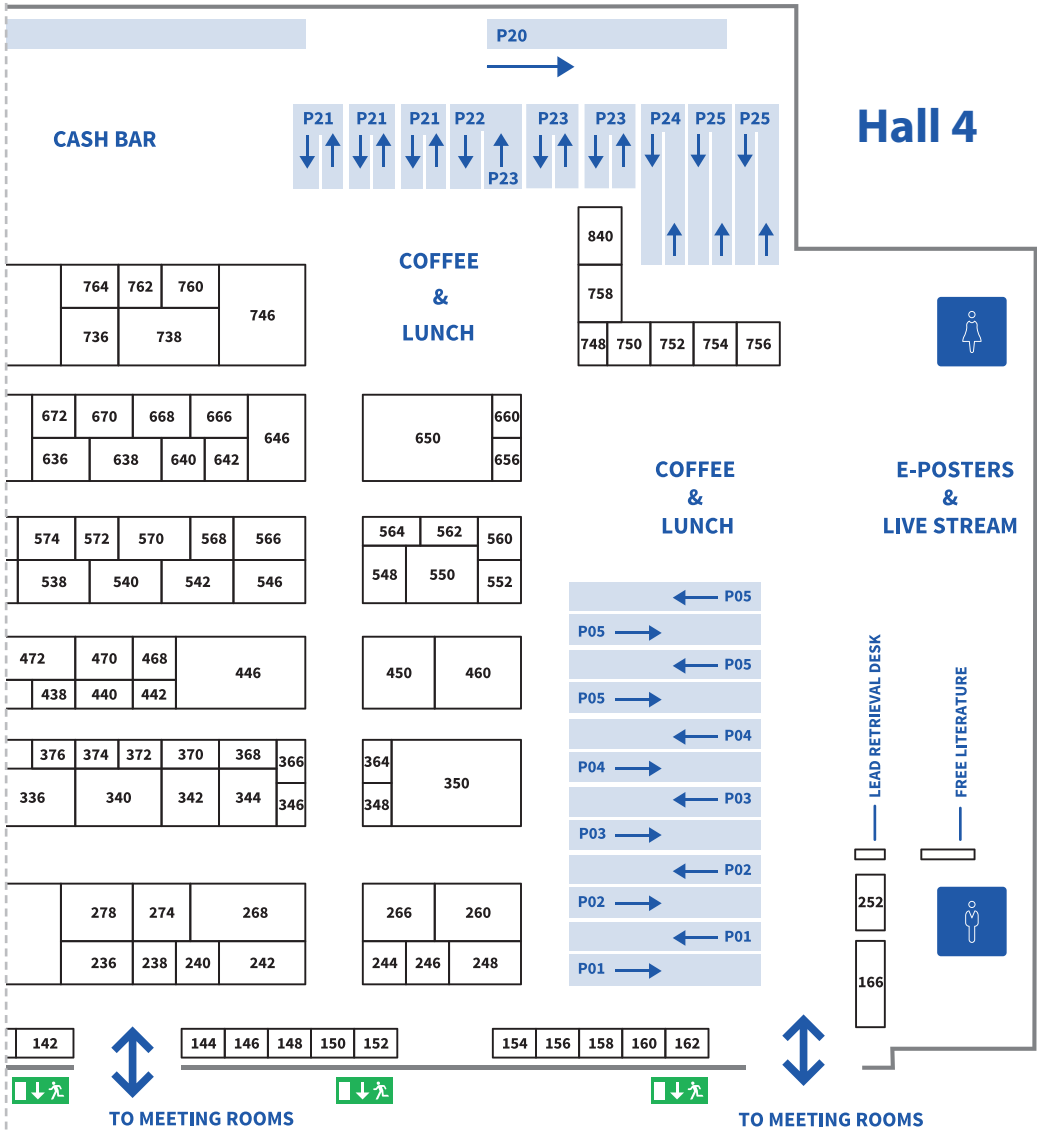
The sponsors of the corporate satellites planned within the main conference programme are approved as reputable and relevant by the Scientific Programme Committee. However, the detailed content of the presentations is proposed directly by the sponsors and under their responsibility. Neither the ESHG nor the organisers have endorsed the content in any way.



## Posters Topics

P01 Reproductive Genetics  
 P02 Prenatal Genetics  
 P03 Sensory disorders (eye, ear, pain)  
 P04 Internal Organs & Endocrinology  
 (Lung, Kidney, Liver, Gastrointestinal)  
 P05 Skeletal, Connective Tissue, Ectodermal and  
 Skin Disorders

P06 Cardiovascular Disorders  
 P07 Metabolic and Mitochondrial Disorders  
 P08 Immunology and Hematopoietic System  
 P09 Intellectual Disability  
 P10 Neurogenetic and Psychiatric Disorders  
 P11 Neuromuscular Disorders  
 P12 Multiple Malformation/Anomalies Syndromes



- P13 Cancer Genetics
- P14 Genome Variation and Architecture
- P15 Cytogenetics
- P16 New Technologies and Approaches
- P17 Diagnostic Improvements and Quality Control
- P18 Bioinformatics, Machine Learning and Statistical Methods

- P19 Personalized Medicine and Pharmacogenomics
- P20 Population Genetics and Evolutionary Genetics
- P21 Functional Genomics and Epigenomics
- P22 New Treatments for Genetic Disorders
- P23 Genetic Counselling/Services/Education
- P24 Ethical, Legal and Psychosocial Aspects in Genetics
- P25 GWAS

*List correct as per date of printing.*

3billion	430	Element Biosciences	840
Abomics Pharmacogenetics	144	EMQN	538
Active Motif	374	enGenome	248
ADS Biotech	546	Enzo Life Sciences	382
Agilent Technologies	510	ESHG - European Society of Human Genetics	730
Alitheia Genomics	370	ESHG-Young	776
Allelica	142	Euformatics	130
American Society of Human Genetics	118	Eurofins Genomics	236
Asuragen, a Bio-Techne Brand	268	European Reference Networks	112
Automata Technologies	748	EYS MEDİKAL VE LABORATUVAR PROJELERİ	438
Azenta Life Sciences	574	Fabric Genomics	564
Beckman Coulter Life Sciences	310	FamGenix	132
BGI Genomics	724	FDNA	156
Bio Molecular Systems	436	Fluidigm – see Standard BioTools	636
BIOKÉ	660	Franklin	778
Biomarker Technologies (BMKGENE)	578	Fulgent Genetics	348
biomodal	714	Gene People	252
Bionano	330	GENES2ME	718
BioSkryb Genomics	774	Genetics Society of America	154
BioVendor Group	410	GENEYX	768
Blueprint Genetics	650	Genial	158
Breda Genetics	282	Genome Diagnostics Nijmegen Maastricht	344
Capricorn Scientific	828	Genomenon	560
CeGaT	336	GenomeScan	656
Celeemics	610	GenomeWeb	140
CENTOGENE	460	Genomize	244
Clent Life Science - see Microzone	368	GenQA	630
Congenica	138	GEPADO - software solutions for genetics	366
Covaris	640	Golden Helix	566
CS Genetics	372	Hamilton	550
Cyanagen	826	Hangzhou Allsheng Instruments	638
CyberGene	580	Health 2030 Genome Center	116
Cytiva	424	Health in Code	210
Dante Genomics	808	Illumina	230
Devyser	470	Inagene Diagnostics	378
DNA Genotek	284	Informed Genomics	146
DNAexus	376	INTEGRA Biosciences	814
		INOREVIA	536
		Integrated DNA Technologies	392
		Isohelix	576
		The Jackson Laboratory	570
		JSI medical systems	646

Karger Publishers	680	Randex Laboratories	246
LABGENETICS	542	REFERENCE LABORATORY GENETICS	224
LaCAR MDx Technologies	612	Revvity	608
LGC Clinical Diagnostics	812	Roche Sequencing Solutions	350
Life & Brain	340	Sampled	440
Limbus Medical Technologies - see varvis®	266	Scale Biosciences	152
		Scipio bioscience	150
Macrogen Europe	760	SeqOne Genomics	278
magtivio	162	SeekGene BioSciences	708
Massive Bioinformatics	810	Singleron Biotechnologies	238
MDPI - Academic Open Access Publishing	824	Singular Genomics	572
Medicover Genetics	616	Sistemas Genómicos	738
Metabolon	764	SoftGenetics - Co-exhibitor of BIOKÉ	660
MGI Tech	746	SomaLogic	312
MGZ Munich	228	SOPHiA GENETICS	606
Microzone	368	Source Genomics,	
Molecular Biology Systems	710	part of Source BioScience group	562
MRC Holland	666	Springer Nature	672
MRC National Mouse Genetics Network	820	Standard BioTools	636
		Synthego	148
Neogen	758		
New England Biolabs	540	Takara Bio Europe	324
Nightingale Health	756	Tecan	670
NimaGen	668	Telesis Bio	160
Nonacus	762	Thermo Fisher Scientific	446
Nostos Genomics	750	Tokyo Ohka kogyo	818
Novogene Europe	552	TRUPCR Europe	568
		Twist Bioscience	260
OGT	530		
Olink Proteomics	490	Ultima Genomics	642
Omega Bio-tek	442	Unilabs	274
Oncodia	822		
Optolane Technologies	468	VarSome	528
Orphanet - INSERM US14	114	varvis®	266
Oxford Nanopore Technologies	728	Vazyme Biotech	806
		VectorBuilder	754
PacBio	450	Veritas	736
Parse Biosciences	134		
PC PAL	346	Watchmaker Genomics	240
PCR Biosystems	548	Wisepress Medical Bookshop	166
PhenoTips	136		
Promega Corporation	428	Yourgene Health	242
qGenomics	364	Zymo Research Europe	342
QIAGEN	472		
Qlucore	752		
Quantabio	492		

**Exhibition & Poster Area – Hall 4 – Dates & Opening Hours**

Saturday, June 10	09.30 – 18.30 hrs
Sunday, June 11	09.30 – 17.00 hrs
Monday, June 12	09.30 – 17.00 hrs
Tuesday, June 13	CLOSED

**Products & Services Index**

The Index of Products and Services may be found in the ESHG 2023 Conference App. Download the App, for iOS or Android, from iTunes App Store and Google Play Store.

**Exhibition Catalogue & Corporate Satellites Programmes**

The Exhibition Catalogue & Corporate Satellites book lists exhibitors with further information on the companies and products, as well as invites to the corporate satellites, and their programmes.

**Floor Plan – Exhibition & Poster Topics**

You will find the Exhibition & Poster floor plan in the conference bag area on the Concourse.

**Posters – Mounting, Viewing & Removal Schedules**

Poster presentations will be held in Hall 4 from 10 – 12 June.

Poster mounting, viewing and removal times are:

Saturday, June 10	09:30 – 18.30 hrs	Poster mounting / viewing
Sunday, June 11	09.30 – 17.00 hrs	Poster viewing
Monday, June 12	09.30 – 16.45 hrs	Poster viewing
	15.45 – 16.45 hrs	<b>Poster removal Groups A-C</b>
	16.45 – 17.00 hrs	<b>Poster removal Group D</b>

Posters not removed by 17.00 hrs on Monday 12 June will be taken down and will not be stored or sent to authors after the meeting.

### Coffee Breaks, Cash Bar, Lunch

Official coffee breaks, as per the final programme, will be held in the Exhibition & Poster Hall on Saturday, Sunday and Monday.

Also outside the official coffee break times there will be free coffee and tea in Hall 4.

Coffee breaks & lunch on Tuesday: Hall 3

The Cash Bar in Hall 4 is open during exhibition opening hours.

The menu includes sandwiches, salads, selection of warm dishes and drinks.

The menu is available at the Cash Bar. Payment by card only (debit and credit card).

Pre-ordered lunch bags will be available during lunch breaks at the coffee break areas.

Lunch bags cannot be ordered on-site.

### Lead Retrieval System used by Companies

Many companies will be using a so-called Lead Retrieval System on their stands and at the entrance to their corporate satellites.

Note the following please:

- Companies using the device **MUST** ask permission to scan the QR code on your badge. Refusal to have your badge scanned does not entitle a company to deny you access to their corporate satellite and/or to enter an activity at their stand.
- The QR code gives this company access to your contact details as follows (note: only in case you opted for this during the registration process AND/OR if agreed with the company scanning your badge):
  - o name and institution
  - o e-mail address

Thank you for your understanding and cooperation.

## Registration and Opening Hours

### Opening Hours Registration

Friday, June 09	14.00 – 19.00 hrs BST
Saturday, June 10	07.30 – 20.15 hrs BST
Sunday, June 11	08.00 – 19.00 hrs BST
Monday, June 12	08.00 – 19.00 hrs BST
Tuesday, June 13	08.30 – 14.00 hrs BST

### Opening Hours Speaker Service Centre

Friday, June 09	14.00 – 19.00 hrs BST
Saturday, June 10	07.30 – 20.15 hrs BST
Sunday, June 11	08.00 – 19.00 hrs BST
Monday, June 12	08.00 – 19.00 hrs BST
Tuesday, June 13	08.30 – 16.00 hrs BST

### Opening Hours Exhibition and Poster Area

Friday, June 09	CLOSED!
Saturday, June 10	09.30 – 18.30 hrs BST
Sunday, June 11	09.30 – 17.00 hrs BST
Monday, June 12	09.30 – 17.00 hrs BST
Tuesday, June 13	CLOSED!

### Cloakroom

Saturday, June 10	07.30 – 21.00 hrs BST
Sunday, June 11	08.00 – 20.30 hrs BST
Monday, June 12	08.00 – 19.30 hrs BST
Tuesday, June 13	08.30 – 17.00 hrs BST



Want to know more?



## Conference Policy

### Late programme changes

All contents are up-to-date as per date of printing (19.05.2023).

For the most up to date complete scientific programme please consult the programme planner, virtual conference platform or ESHG mobile app.

### Language

The official language of the congress is English (no simultaneous translation available).

### Smoking Policy

The ESHG 2023 is officially a “No-smoking-Conference”. Note that smoking is banned in public buildings and private businesses – including restaurants, pubs, shops, public transport, entertainment venues and workplaces.

### Social Media Guidelines

Please see our full policy on our website. <https://2023.eshg.org/myconference/mediaonlinepolicy/>

The ESHG supports the use of social media around the European Human Genetics Conference to network with your colleagues and friends attending the meeting.

Please do however respect the ESHG social media guidelines.

The views and opinions posted on ESHG's social media do not necessarily reflect the views, opinions, or policies of the ESHG, its Board or membership. The ESHG reserves the right to remove comments it deems to be inappropriate.

### Sustainability

The ESHG Conference is committed to host an event that bears in mind the responsible use of resources, our environment and the use of sustainable conference materials. Hence, we would like to encourage all of our participants to keep these aspect in mind when attending the in-person meeting.

## Glasgow – General Information

### Congress Venue

#### Scottish Event Campus (SEC)

Exhibition Way  
Glasgow G3 8YW  
Scotland, United Kingdom  
<https://www.sec.co.uk/>

More Information



For information about the city of Glasgow visit the 2023 conference website:  
<https://2023.eshg.org/myconference/location-venue/>

The European Human Genetics Conference acknowledges and is grateful for the support of the Glasgow Convention Bureau:

**GLASGOW  
CONVENTION  
BUREAU**

## Opening Networking Mixer - Civic Reception

**Saturday, June 10, 2023, 20.00 - 22.00 hrs BST – Glasgow Science Center,  
50 Pacific Quay, Glasgow G51 1EA**

Network with your colleagues at this mixer on Saturday evening. Drinks and small snacks will be offered.

*The Civic Reception courtesy of The Rt Hon The Lord Provost of Glasgow Councillor Jacqueline McLaren and Glasgow City Council is free of charge, however admission is only possible for in-person registered participants.*

*Please make sure that you have your badge with you for identification and access to the event.*

### FIND YOUR (GENETIC) MATCH

Have you ever thought about working at your dream university or laboratory? We at ESHG and ESHG-Y bring to you a first of its kind experience. The 'Find your (Genetic) Match' event is a wonderful opportunity for academic and company recruiters and young trainees. Enjoy a wonderful atmosphere at ESHG where you can find your potential job match or your next project collaborator.

'Find your (genetic) match' will take place for the first time in 2023 as being part of the Opening Networking Mixer on Saturday, June 10th, 2023 in a dedicated area at the Glasgow Science Center.

Location: Atrium of the Glasgow Science Center

Dress code: casual

For directions on how to get to the Networking Evening venue please scan the QR code.

<https://2023.eshg.org/myconference/official-events/>

The European Genetics Conference acknowledges and is grateful for the support of the Lord Provost and City Council of Glasgow.



## ESHG Networking Evening (at own expense)

**Monday, June 12, 2023, 20.00 hrs BST – Location: SWG3, 100 Eastvale Pl, Glasgow G3 8QG**

The networking evening is a great opportunity to meet with friends and colleagues from around the world in a relaxed atmosphere, enjoying the unmatched charm and fascination of Glasgow. Those who have shared this evening with us in previous years know, one would not want to miss it!

- Ticket: EUR 70.-
- Students: EUR 50.-

Dinner & 3 drinks are included in the price.

Dress code: casual

For directions on how to get to the Networking Evening venue please scan the QR code.

<https://2023.eshg.org/myconference/official-events/>

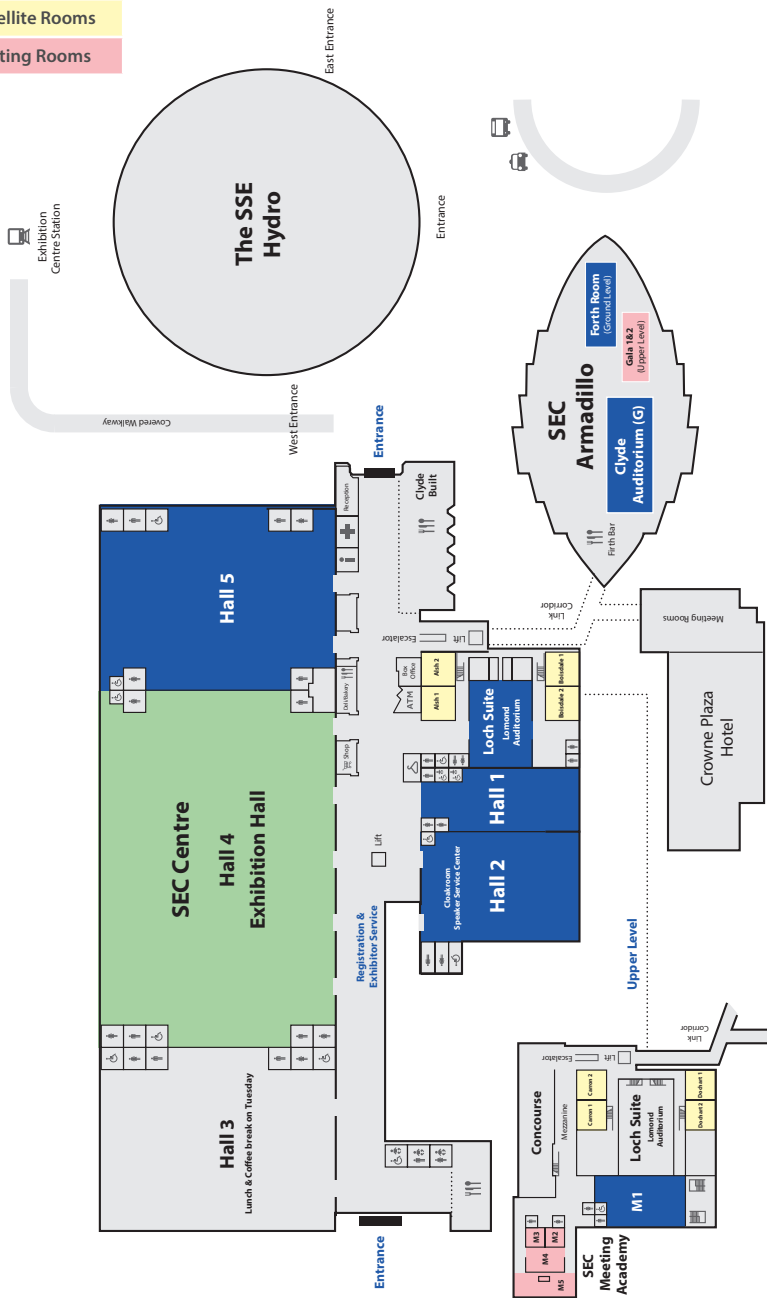
Want to know more?

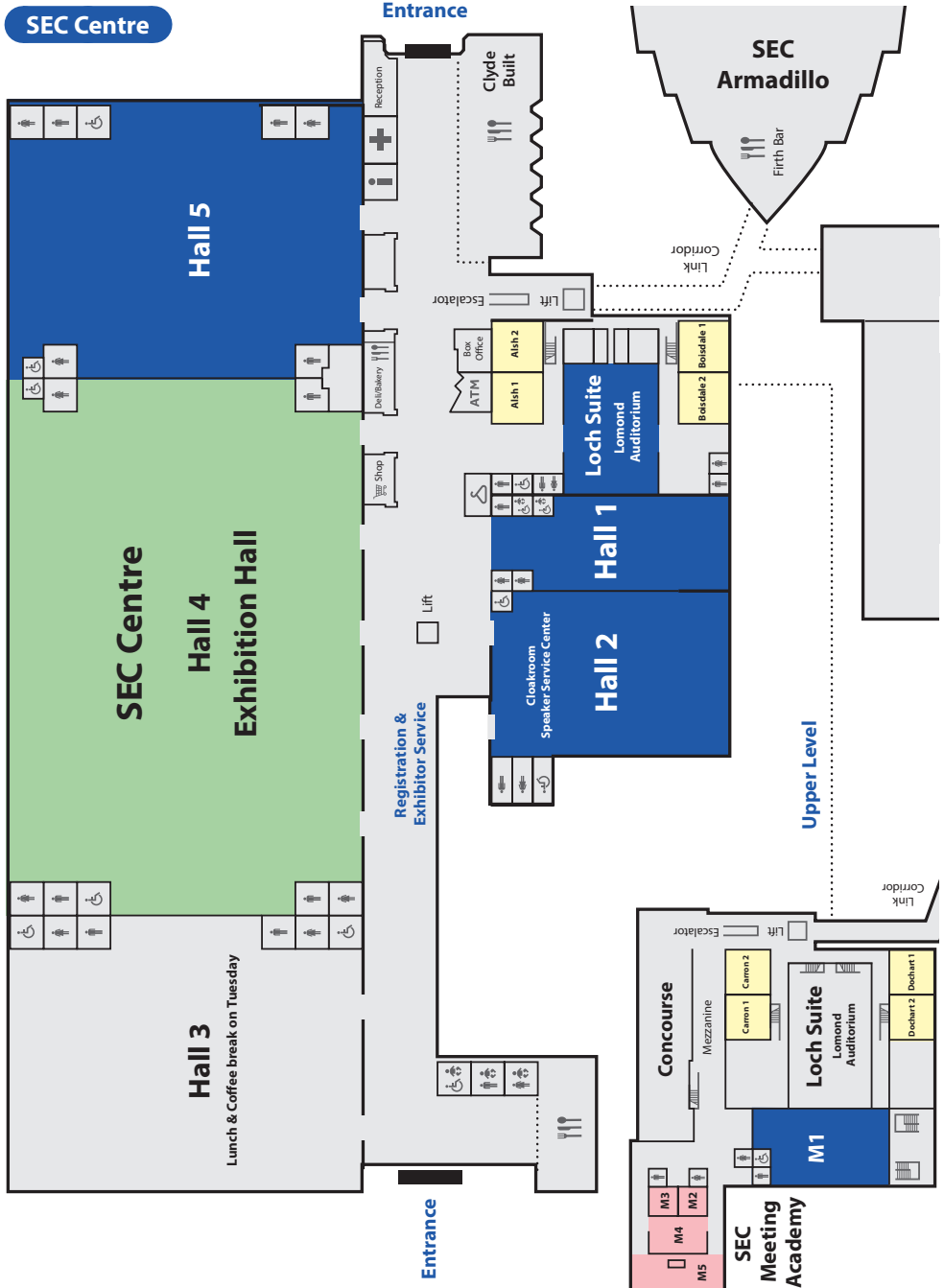


Legend:

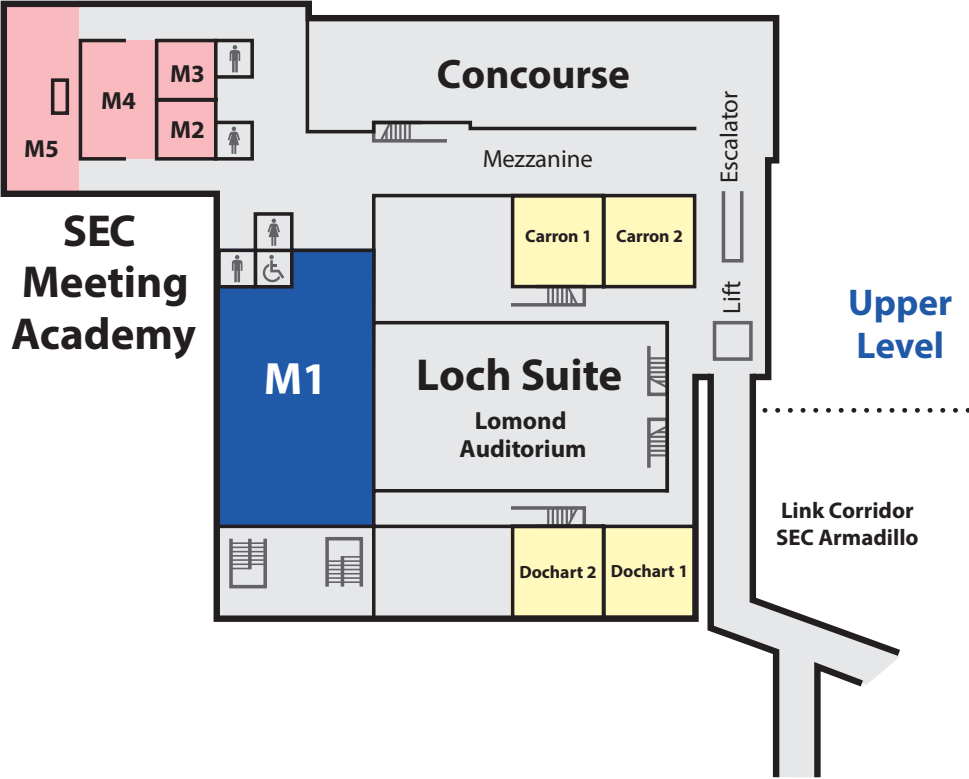
- Exhibition & Poster & Lunches
- Conference Session Rooms
- Corporate Satellite Rooms
- Business Meeting Rooms

Overview

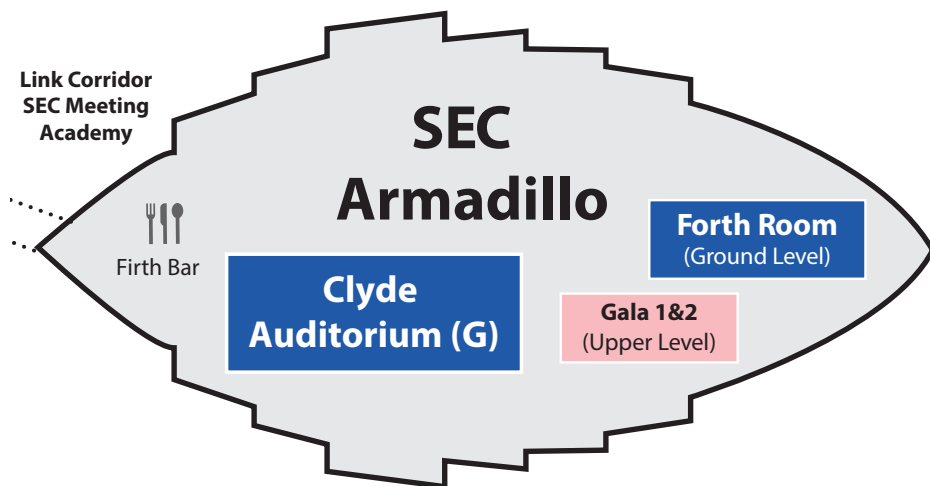




SEC Meeting Academy



## SEC Armadillo



**SEC** Scottish  
Event  
Campus



A Sysmex Group Company

**Join us  
at booth  
#530**

# OGT: The complete solution to meet your haematology clinical research and diagnostic needs

**CytoCell**  
**FISH**

FISH probes,  
including our new  
IVDR probes

**CytoSure**  
**Arrays**

Arrays to enable  
your research into  
a wide range of  
disease phenotypes

**SureSeq**  
**NGS**

NGS panels that  
fit your exact  
haematological  
research needs

**Talk to our team of experts today!**

Further information UK +44 (0) 1865 856800 | [contact@ogt.com](mailto:contact@ogt.com) | [ogt.com](https://ogt.com)

© Oxford Gene Technology IP Limited – 2023. All rights reserved. CytoSure®, SureSeq™ and myProbes®: For Research Use Only; Not for Use in Diagnostic Procedures. CytoCell®: Product availability may vary from country to country and is subject to varying regulatory requirements. Please contact your local representatives for availability.





THE COMPLETE SOFTWARE SOLUTION FOR ALL CLINICAL NGS APPLICATIONS  
NGS PANELS | CANCER DIAGNOSTICS | EXOMES | GENOMES | CARRIER SCREENING

### **Corporate Satellite**

Sunday | June 11 | 14.00 - 15.30  
Room Carron

or visit us at

**Booth #266**

# Navigate the NGS universe with confidence

How varvis® helps you to establish new applications, streamline your workflows and adjust to new reference data

[www.varvis.com/ESHG2023](http://www.varvis.com/ESHG2023)

CE-IVD - Made for use in diagnostic procedures

